

REV.	DATE	DESCRIPTION
1	08/12/2014	ISSUED FOR PERMITS
2	08/12/2014	REVISED PER COMMENTS
3	08/12/2014	REVISED PER COMMENTS
4	08/12/2014	REVISED PER COMMENTS
5	08/12/2014	REVISED PER COMMENTS
6	08/12/2014	REVISED PER COMMENTS
7	08/12/2014	REVISED PER COMMENTS
8	08/12/2014	REVISED PER COMMENTS
9	08/12/2014	REVISED PER COMMENTS
10	08/12/2014	REVISED PER COMMENTS
11	08/12/2014	REVISED PER COMMENTS
12	08/12/2014	REVISED PER COMMENTS
13	08/12/2014	REVISED PER COMMENTS
14	08/12/2014	REVISED PER COMMENTS
15	08/12/2014	REVISED PER COMMENTS
16	08/12/2014	REVISED PER COMMENTS
17	08/12/2014	REVISED PER COMMENTS
18	08/12/2014	REVISED PER COMMENTS
19	08/12/2014	REVISED PER COMMENTS
20	08/12/2014	REVISED PER COMMENTS
21	08/12/2014	REVISED PER COMMENTS
22	08/12/2014	REVISED PER COMMENTS
23	08/12/2014	REVISED PER COMMENTS
24	08/12/2014	REVISED PER COMMENTS
25	08/12/2014	REVISED PER COMMENTS
26	08/12/2014	REVISED PER COMMENTS
27	08/12/2014	REVISED PER COMMENTS
28	08/12/2014	REVISED PER COMMENTS
29	08/12/2014	REVISED PER COMMENTS
30	08/12/2014	REVISED PER COMMENTS

FINAL FOR SEWER DESIGN

PROJECT: GREENWICH DUMONT URBAN REHEWAL ASSOCIATES, LLC
 PROJECT LOCATION: GREENWICH STREET, GREENWICH, NY 10806
 SHEET NO.: 07/27/14
 DRAWN BY: [Name]

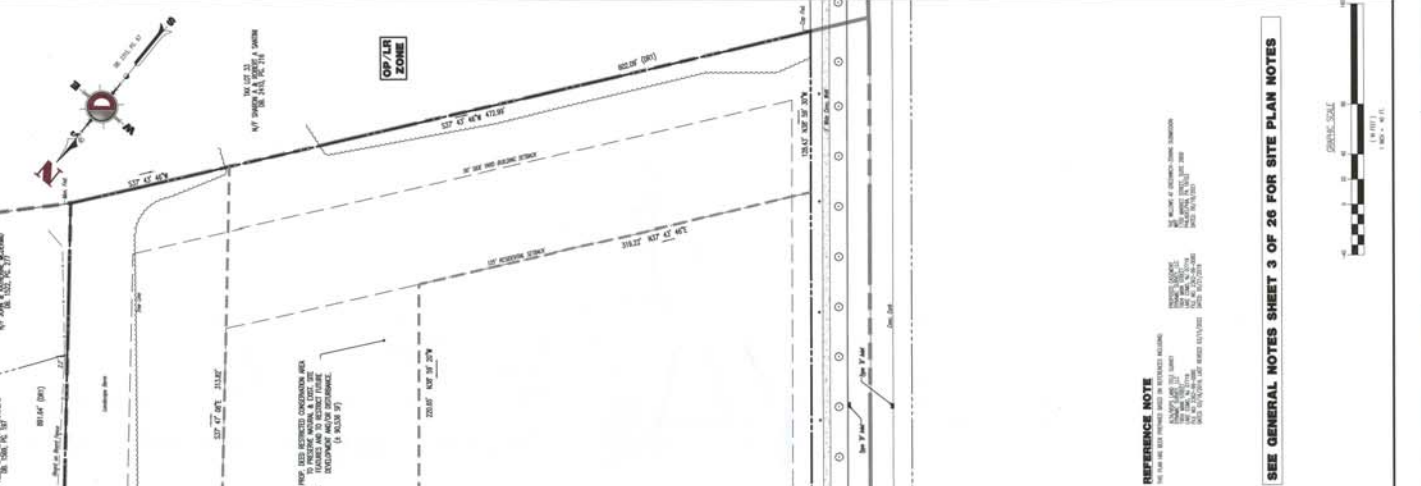
DYNAMIC ENGINEERING
 PROFESSIONAL ENGINEERS & ENVIRONMENTAL SCIENTISTS
 245 High Street, Suite 110
 Chester, NJ 07703
 T: 908.677.7227 F: 908.677.0222
 www.dynamiceng.com

BRETT W. SWAPNETZ
 PROFESSIONAL ENGINEER
 LICENSE NO. 23407-10-000

STEPHEN L. SCHWARTZ
 PROFESSIONAL ENGINEER
 LICENSE NO. 23407-10-000

OVERALL SITE PLAN

Scale: 1" = 20' (1:20)
 SHEET NO. **5**



SEE GENERAL NOTES SHEET 3 OF 26 FOR SITE PLAN NOTES

REFERENCE NOTE
 THE PLAN HAS BEEN PREPARED IN ACCORDANCE WITH THE OFFICIAL RECORDING ACT AND THE OFFICIAL RECORDING ACT, N.J.A.C. 17:27. THE PLANNING BOARD HAS REVIEWED THIS PLAN AND FOUND IT TO BE IN ACCORDANCE WITH THE OFFICIAL RECORDING ACT AND THE OFFICIAL RECORDING ACT, N.J.A.C. 17:27.

